



“NEWS UPDATE”

October 2007

CBSDC starts re-development of Margaret Bowater Park

For over 50 years Margaret Bowater Park has served as the premier municipal park in this city. Generations of children and their families have enjoyed its attractions and scenic beauty all year round. The Master Plan to redevelop the park was commissioned by the Corner Brook Stream Development Corporation and adopted by Council upon its completion. It will be used to guide the process of upgrading and revitalizing this venerable recreational amenity.

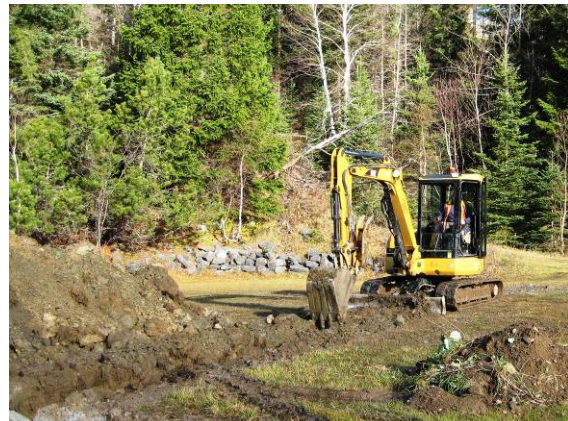
The CBSDC has entered into an agreement with the City to re-develop the north side of Margaret Bowater Park in the first of a multi-phase effort. Work started this fall to address long standing drainage issues and to begin construction of a new parking area. This phase will also see reconfiguration of new CSA approved playground equipment with the CBSDC walking trail network leading to a new underpass planned for Phase II. Landscape remediation efforts along with a fresh new vegetation plan will complete work on the north side in the summer of 2008.

“The City of Corner Brook is extremely proud of the wonderful working relationship we have with the CBSDC. Margaret Bowater is more than just a park; it is the heart of the City and as such, holds a special place for residents and visitors. Over the years, the CBSDC has demonstrated a commitment to enhancing the quality of life for residents, while contributing to the social and economic fabric of our community. When we consider the importance of Margaret Bowater Park to our community in terms of recreation, leisure and cultural activities, it should come as no surprise that we chose to work with the CBSDC to redevelop this very important piece of City infrastructure.”

Charles Pender - Mayor of Corner Brook



Outdated playground equipment



Drainage system installation